



Los Angeles . California . USA
Los Angeles . California . USA

NOVARA



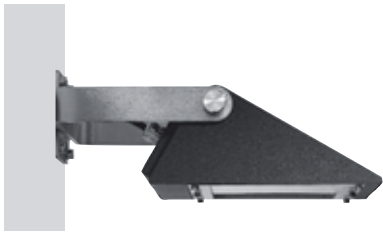


■ Munich . Germany
■ Cologne . Germany

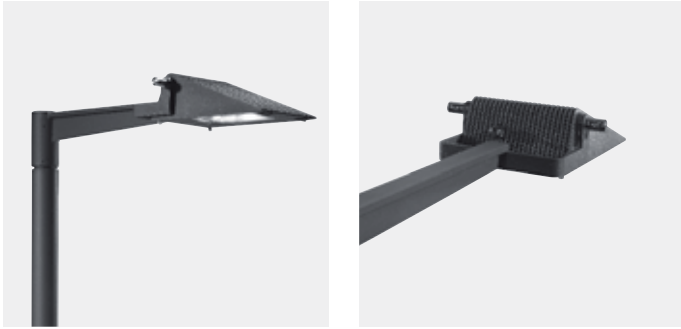
NOVARA



NOVARA




NOVARA



www.hessamerica.com/1750

NOVARA 450 SAL . Pole Mounted Luminaire

Simplified styling of the venerable NOVARA SAL streamlines the luminaire to complement contemporary architecture. The angular cast aluminum housing with distinctive cooling fins is accented with polished stainless steel mounting knobs. Frameless tempered glass lens with two quarter-turn fasteners allows for tool-less relamping. Mounting bracket is fabricated steel and available in single or twin configurations. Straight round pole with flush handhole is available in steel or aluminum. Steel pole and mounting bracket are hot-dip galvanized prior to being finished in finely textured paint. All hardware is stainless steel. Standard color; matte silver grey metallic. Special colors available.  Listed for Wet Locations.

Model	Pole	Lamp
NV450SAL-P	20' Round Straight	250 MH / 150 MH / LED

