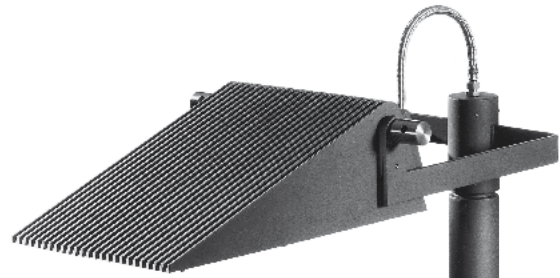
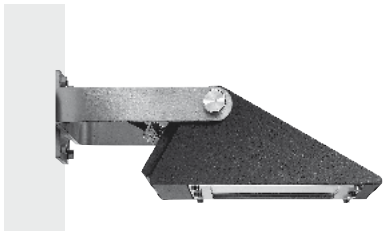


NOVARA



NOVARA



www.hessamerica.com/3710

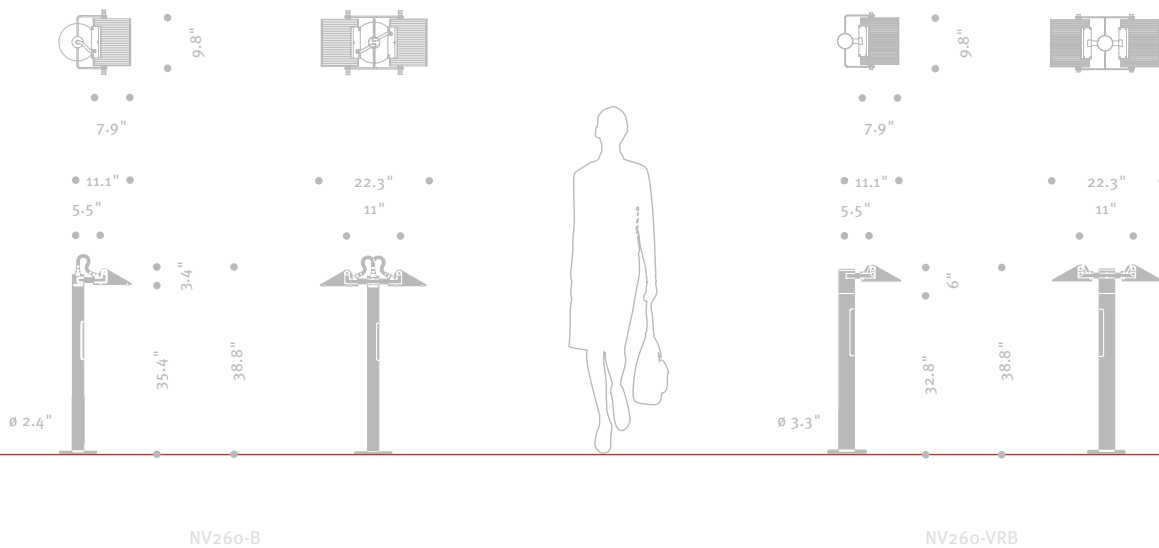
NOVARA 260 . Illuminating Bollard

Cast aluminum and stainless steel create a synthesis of form and function in the NOVARA. The angular cast aluminum housing is punctuated by distinctive cooling fins. Mounting knobs are constructed of polished high-grade stainless steel. Single or twin configurations may be fitted with a clear, etched, or optional prismatic lens. Electrical conductor is housed in attractive braided stainless steel line. Straight round steel bollard shaft with flush handhole and mounting bracket are hot-dip galvanized prior to being finished in finely textured paint. All hardware is stainless steel. Standard color; matte silver grey metallic. Special colors available. Listed for Wet Locations.

NOVARA 260 VRB . Illuminating Bollard

Vandal resistant model same as NV 260 bollard except with concealed wire way, rigid luminaire mounting, and larger diameter shaft. Listed for Wet Locations.

Model	Height	Lamp
NV260-B	35.4"	26 CFL / LED
NV260-VRB	32.8"	26 CFL / LED



NV260-B

NV260-VRB

Design: Klaus Begasse

Phone: 864.487.3535 • Fax: 864.487.3175 • www.hessamerica.com

P.O. Box 28 • Gaffney, SC 29342-0028

HessAmerica