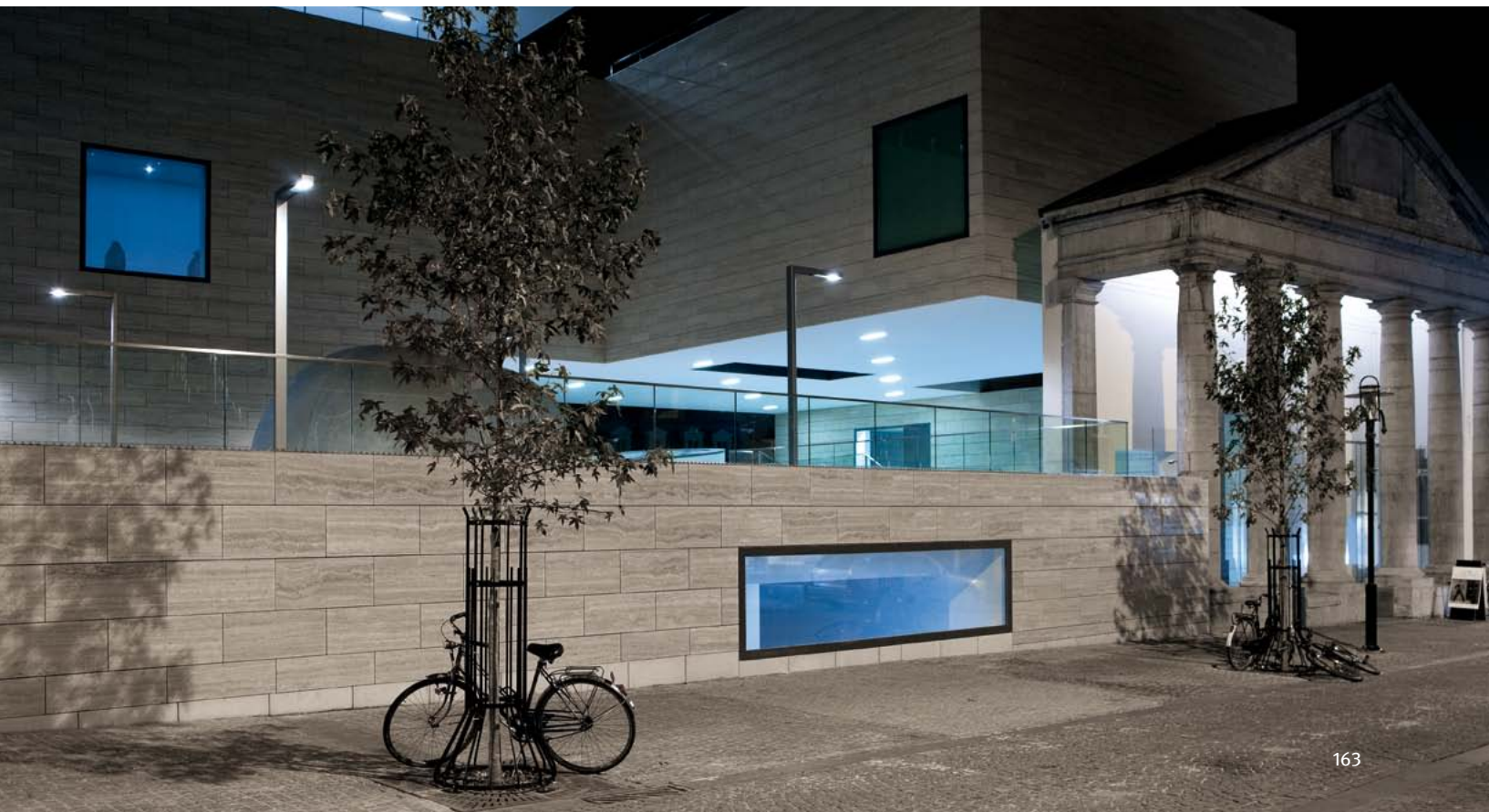




■ Jeddah . Saudi Arabia
■ Leuven . Belgium

LINEA



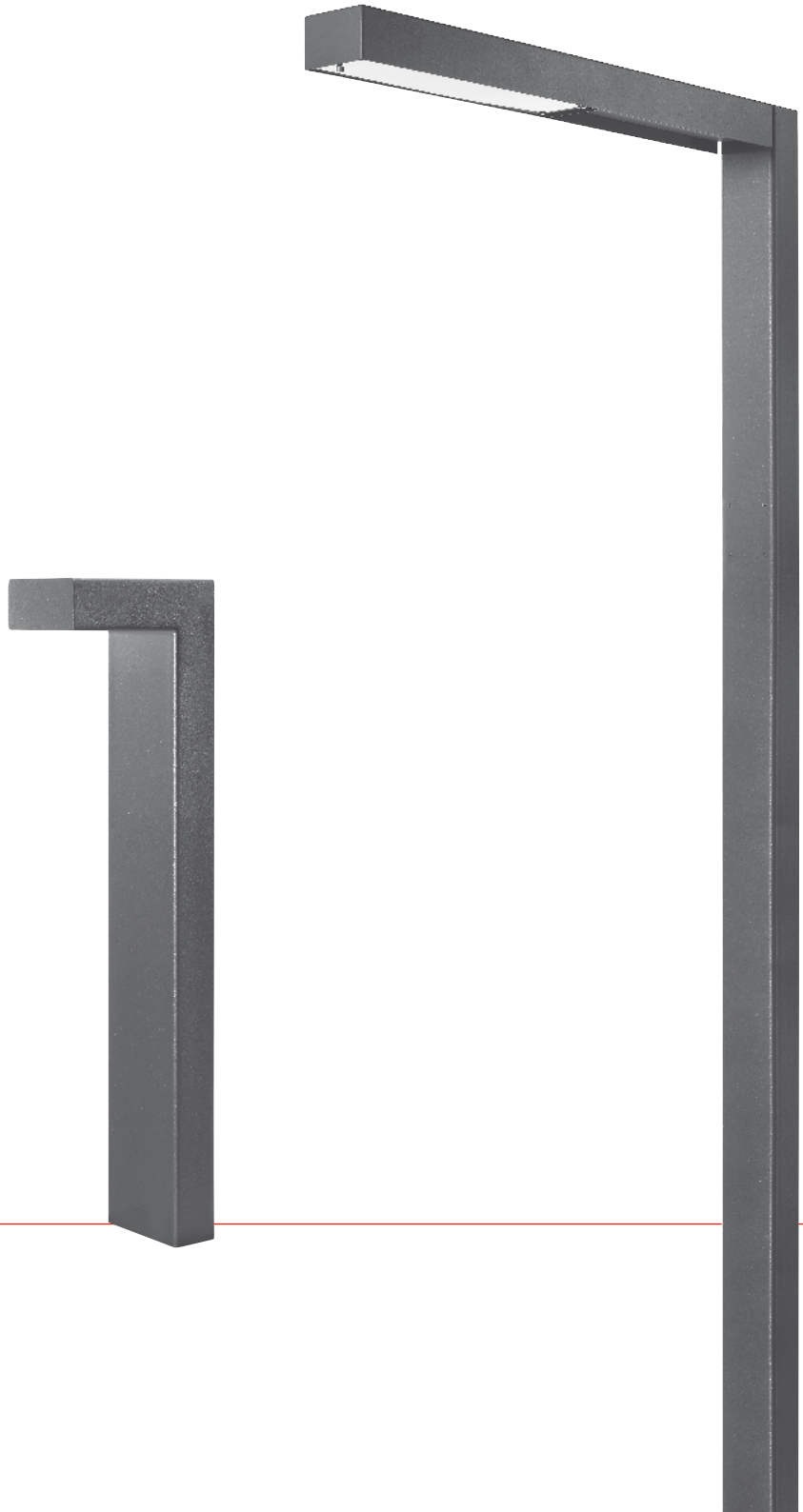


■ Heidenheim . Germany
■ Heidenheim . Germany

LINEA



LINEA



LINEA

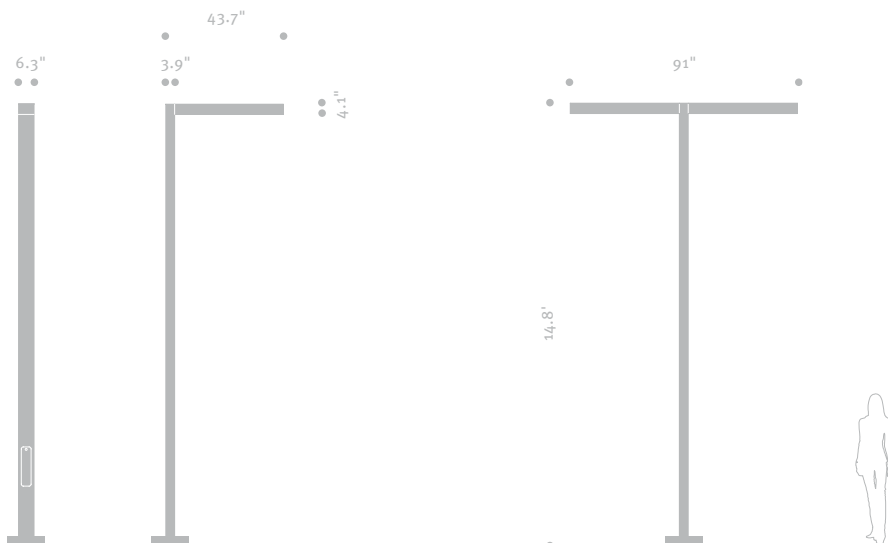


www.hessamerica.com/1111

LINEA 450 . Pole Mounted Luminaire

LINEA's minimalist profile adds subtle accent to contemporary architecture. It is available in single, twin, or bi-level mounting configurations to meet a variety of site, area, or pathway lighting requirements. Rectangular luminaire constructed of fabricated aluminium transitions seamlessly to the pole with matching rectangular profile. Frameless clear tempered glass lens with single quarter-turn fastener provides tool-less access for relamping. Optional matte glass lens is available on request. Steel pole is hot-dip galvanized prior to being finished in finely textured paint. All hardware is stainless steel. Standard colors; matte silver grey metallic or graphite grey. Special colors available. CSA certified for Wet Locations.

Model	Pole	Lamp
LN450	15' Straight Rectangular	150 MH / 70 MH / 140 COS / 90 COS / 60 COS / LED



LN450